

laundry dosing systems

BrightLogic Laundry



4 pump standard laundry system

BrightLogic is such a flexible system that it's ideal for small on-premises laundries and large industrial operations alike. Need one chemical dosed at a higher volume than another? Our mixed pump version will do the job. What about connecting to 'intelligent' machines, whilst still being able to operate a manifold system and record pump-cycle information? You can with BrightLogic's 'relay mode'. All units are CE, RoHS and WEEE approved.

Standard Version Suitable for:

- Small to medium-sized 'non-intelligent' commercial washing machines
- Wash load of up to 35kg

Highflow Version Suitable for:

- Larger washing machines
- Wash load of between 35kg to 100kg



formula select

benefits include -

Installation to any OPL or industrial machine, with up to 10 inputs. This includes tunnel machines, clock/mechanically/card reader/PLC controlled machines.

Diagnostic on-screen test mode that eradicates the need for costly test equipment. Now an engineer can monitor the signals from the wash extractor to the dispensers in real time and pinpoint exactly where the problem lies, saving time and money.

Safer handling of chemicals, thanks to 3 manifold outputs and integral safety stops to prevent the risk of cross-contamination of alkaline, acid and neutral chemicals. An alarm also sounds if no water is present, but can be snoozed for 30 minutes with a button press.

More security and less hassle as the Prime, Pump-Stop and View modes can be disabled.

Absolute control of flow is also available thanks to the speed control on all the pumps, which enables one pump system to suit all your needs



5 pump mixed laundry system



6 pump highflow laundry system

laundry dosing systems

BrightLogic laundry

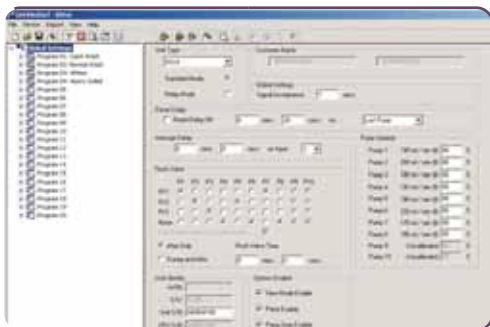
A simple, affordable software solution providing total control

As it controls up to 10 pumps, up to 20 programs and up to 10 separate inputs, it can be complex to program or retrieve data from the BrightLogic Laundry Systems using the on board display.

While other laundry systems offer expensive computerised control solutions, BrightLogic makes it simple and affordable.

Thanks to the PC software, you can assume total control of your BrightLogic unit with connection to your laptop. The software is available as a free download from our website -

www.brightwell.co.uk - simply contact us first for your installation password.



The unique wireless feature on the BrightLogic laundry system has been designed to make those awkward to reach units more accessible to programme.

Using a wireless dongle you can now control your units through a laptop. Simply find the machine you want, and connect using 2.4 GHz RF signals. (Windows operating system only)

Utilise every feature in the BrightLogic software to control up to 10 pumps and 20 programmes.



Alternatively you can connect the unit to your laptop computer using RS232 Serial COMMS.

Logic standard pump laundry units

power supply	90V to 265V AC, 50-60Hz, 1.48A (max), 133W (max)
current (@230V)	L4 - 0.18A, L6 - 0.31A, L8 - 0.44A, L10 - 0.57A
flowrate	6.4mm Silicone - 350ml/min (flowrate taken using water at 100% speed)
control circuitry	16x4 illuminated alphanumeric LCD display programming via 9 external keypad keys, security access code
motor	brushless - 24V DC, 600mA
enclosure	glass filled polypropylene
installation kit	available on request
approvals	EMC 89/336/EEC - EN61000-6-2:2005 EN61000-6-3:2007 LVD 72/23/EEC - EN60335-1:2002+A2:2006
dimensions (mm)	control box- H266 x W285 x D166 additional pumps- H186 x W140 x D166 logo - H40 x W40
weight (approx.)	control box - 2.3Kg, pump module - 1.1Kg

Flowrates calculated with water and silicone tube

Flowrates of the new BrightChem tube can be obtained on request

Logic highflow pump laundry units

power supply	90V - 230V AC, 50-60Hz, 4A (max), 360W (max)
current (@230V)	L2/H - 0.32A, L4/H - 0.64A, L6/H - 0.98A, L8/H - 1.13A, L10/H - 1.62A
flowrate	9.5mm Silicone - 1000ml/min (flowrate taken using water at 100% speed)
control circuitry	16x4 alphanumeric LCD display programming via 9 external keypad keys, security access code
motor	brushless - 24V DC, 600mA
enclosure	glass filled polypropylene
installation kit	available on request
approvals	EMC 89/336/EEC - EN61000-6-2:2005 EN61000-6-3:2007 LVD 72/23/EEC - EN60335-1:2002+A2:2006
dimensions (mm)	control box-H281 x W203 x D141 additional pumps- H227 x W156 x D132 logo H40 x W40
weight (approx.)	control box - 1.6Kg, pump module - 1.2Kg

Flowrates calculated with water and silicone tube

Flowrates of the new BrightChem tube can be obtained on request